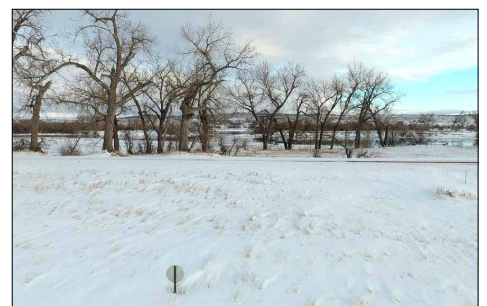
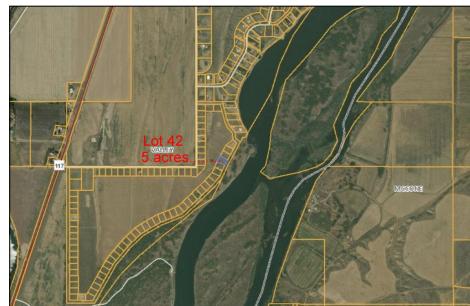


MISSOURI RIVER REALTY



Build your dream home on this lot in the Kirkland Ranch Estates golf course subdivision. Subdivision is adjacent to the Missouri River and just minutes from Fort Peck Dam and Lake. Enjoy some of the best hunting and fishing Montana has to offer just outside your back door.



Lot Size: .5 acre

Utilities available and adjacent to the lot include electric, telephone, hi-speed internet, and public water

Zoning: Residential

2022 Taxes: \$708.97

Property Address

**Lot 42 Eagle Drive
Kirkland Ranch Estates
Nashua, Montana**

\$85,000

List #464TJ

The information contained herein was obtained from the owner and the other sources deemed reliable but is not guaranteed. Prospective buyers are advised to examine the facts to their own satisfaction.

Missouri River Realty ~ 111 3rd. St. South ~ Glasgow, MT 59230 ~ 406-228-2273

www.MissouriRiverRealty.com