

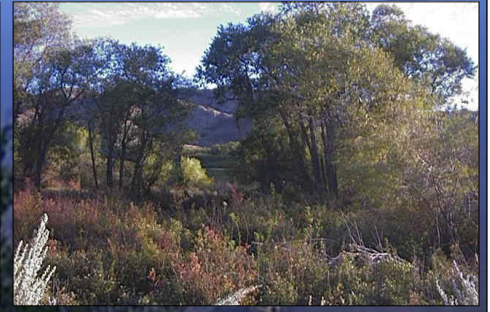
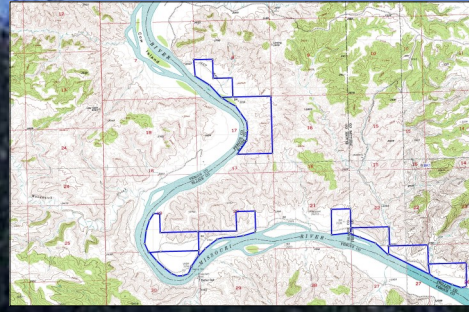
Farm/Ranch

Residential

Investment

Commercial

Recreational



Comments: One of a kind property located on the North bank of the Missouri River. This private property is located inside the wild scenic river corridor and is the first river frontage as you travel up river from the Fort Peck Dam. Remnants of the old power plant and the coal mine that produced electricity in the 1930's for the Ruby mine in the Little Rocky Mountains remain. Own a piece of Montana's heritage. There are 9 lots available, varying in size, from 54+/- to 110+/- acres, price per acre is \$6000.

Lot Sizes: 9 lots available

Lots vary in size 54+/- acres to 110+/- acres

Type of Land: Recreational lots

Missouri River Frontage

Improvements: None

Taxes: To be determined

Property Address

Missouri River Lots

(Up river from Fred Robinson bridge)

\$6000

(Per acre entire lot needs to be purchased)

List #291MR

The information contained herein was obtained from the owner and the other sources deemed reliable but is not guaranteed. Prospective buyers are advised to examine the facts to their own satisfaction.

Missouri River Realty ~ 47177 US Highway 2 ~ Malta, MT 59538 ~ 406-654-2273

www.MissouriRiverRealty.com