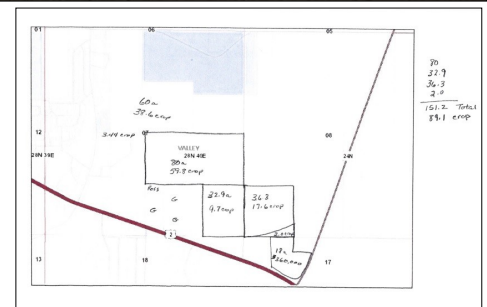




**151 acres of agricultural land with high potential for development located on the East edge of Glasgow. This property is located in the path of growth for the City of Glasgow. Possible additional 60 acres available.**



**Total Acres: 151.2+/-**  
**Crop land 89.1+/-**  
**Native grass 62.1+/-**

**Type of Land:** Agricultural land with high potential for development

**Improvements:** Power, natural gas, and public water available

**Extras:** Development potential

**2016 Taxes:** Estimated \$334.00

**Property Address**

**East edge of Glasgow Montana**

**\$379,000**

**List #453ME**

The information contained herein was obtained from the owner and other sources deemed reliable but is not guaranteed. Prospective buyers are advised to examine the facts to their own satisfaction.

**Missouri River Realty ~ 111 3rd. St. So./Fort Peck Hwy.~ Glasgow, MT 59230~ 406-228-2273**

**www.MissouriRiverRealty.com**