



OFFICE LOCATION:
 111 3rd. St. South
 Glasgow, Montana
 406-228-2273 office

PROPERTY LOCATION:
 East edge of Glasgow
 Glasgow, Montana

ASKING PRICE: \$379,000

www.MissouriRiverRealty.com

General Information

LOT SIZE:Total acres 151.2 +/-
 Crop land 89.1 +/-
 Native Grass 62.1 +/-

TYPE OF LAND: Agricultural land with high potential for development

IMPROVEMENTS: Power, natural gas, and public water available.

EXTRAS: Development potential

WATER: Public water available

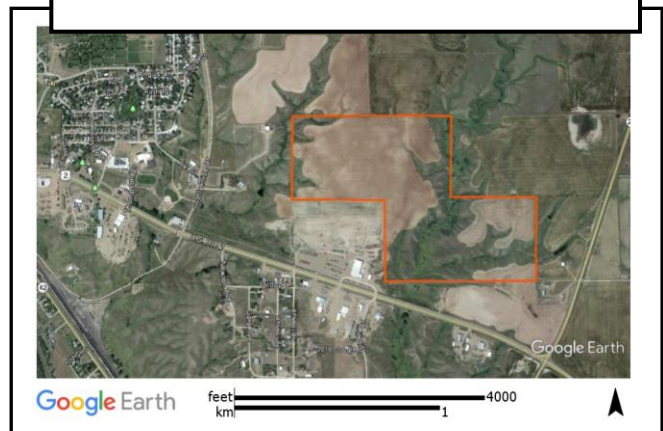
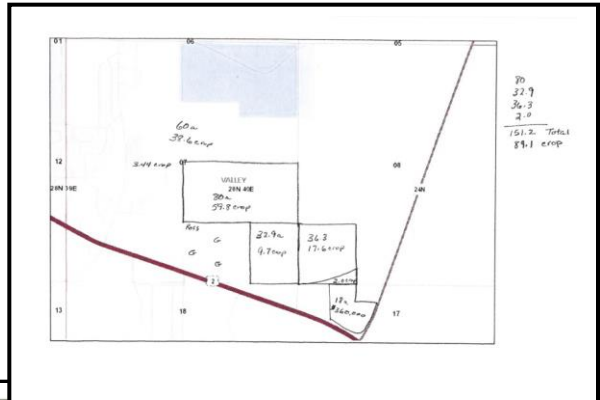
2016 TAXES:estimate \$334

ASKING PRICE: \$379,000



Listing #453ME

151 acres of agricultural land with high potential for development located on the East edge of Glasgow. This property is located in the path of growth for the City of Glasgow. Possible additional 60 acres available.



The information contained herein was obtained from the owner and other sources deemed reliable but is not guaranteed. Prospective buyers are advised to examine the facts to their own satisfaction.