



OFFICE LOCATION:
111 3rd. St. South
Glasgow, Montana
406-228-2273 Office

PROPERTY LOCATION:
Lot 4 Henry James Lane
Gem Views Subdivision
Fort Peck, Montana

ASKING PRICE: \$199,000

www.MissouriRiverRealty.com

General Information

LOT SIZE: 3.6+/- acres

TYPE OF LAND Residential building lot

IMPROVEMENTS: Water, outdoor fire pit, concrete slab for garage

WATER: Fort Peck Rural County Water

HOA FEES: \$200/yr.

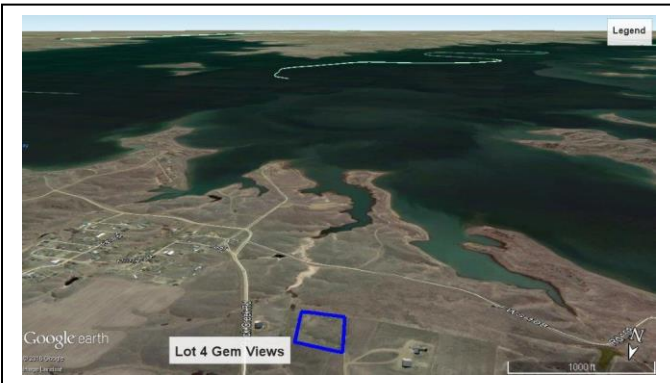
2015 TAXES: \$622.77

ASKING PRICE: \$199,000



Listing #432TJ

Build your dream home on this 3.6 acre lot with views of Fort Peck Lake and adjacent to CMR national wild life refuge. This lot is located in the front row of Gem Views subdivision on Beautiful Fort Peck Lake. It is just a couple minutes from the Duck Creek boat ramp and some of the best fishing Fort Peck Lake has to offer. Some of the nicest homes in the area are located in this 10 lot subdivision. Restrictive covenants protect your investment for the future. Horse OK



The information contained herein was obtained from the owner and other sources deemed reliable but is not guaranteed. Prospective buyers are advised to examine the facts to their own satisfaction.

FARM/RANCH

RESIDENTIAL

INVESTMENT

COMMERCIAL

RECREATIONAL