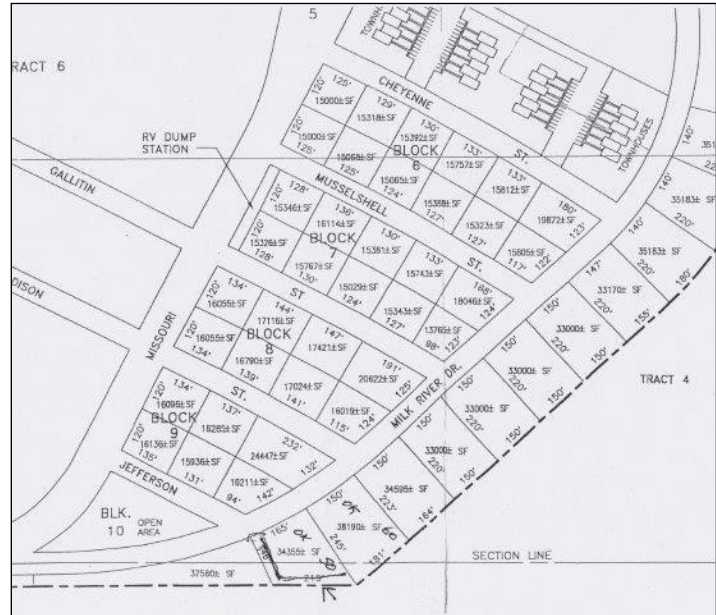




Build your home in this new subdivision on the edge of the town of Fort Peck adjacent to some of the best hunting and fishing Montana has to offer and with all the conveniences of city services. Located in close proximity to Fort Peck Lake, Missouri River, and CM Russell Wildlife Refuge.



**Lot Size: Varies**

**Utilities: All city services available**

**Zoning: Residential**

**2021 Taxes: To be determined**

**Property Address**

**Wind Sock Properties Subdivision**

**Fort Peck, Montana**

**\$55,000**

**List #412WS**

The information contained herein was obtained from the owner and the other sources deemed reliable but is not guaranteed. Prospective buyers are advised to examine the facts to their own satisfaction.

**Missouri River Realty ~ 111 3rd. St. So./Fort Peck Hwy.~ Glasgow, MT 59230 ~ 406-228-2273**

**[www.MissouriRiverRealty.com](http://www.MissouriRiverRealty.com)**